

# Parts Manual

Mfg. No: 1537-1  
2,400 PSI





---

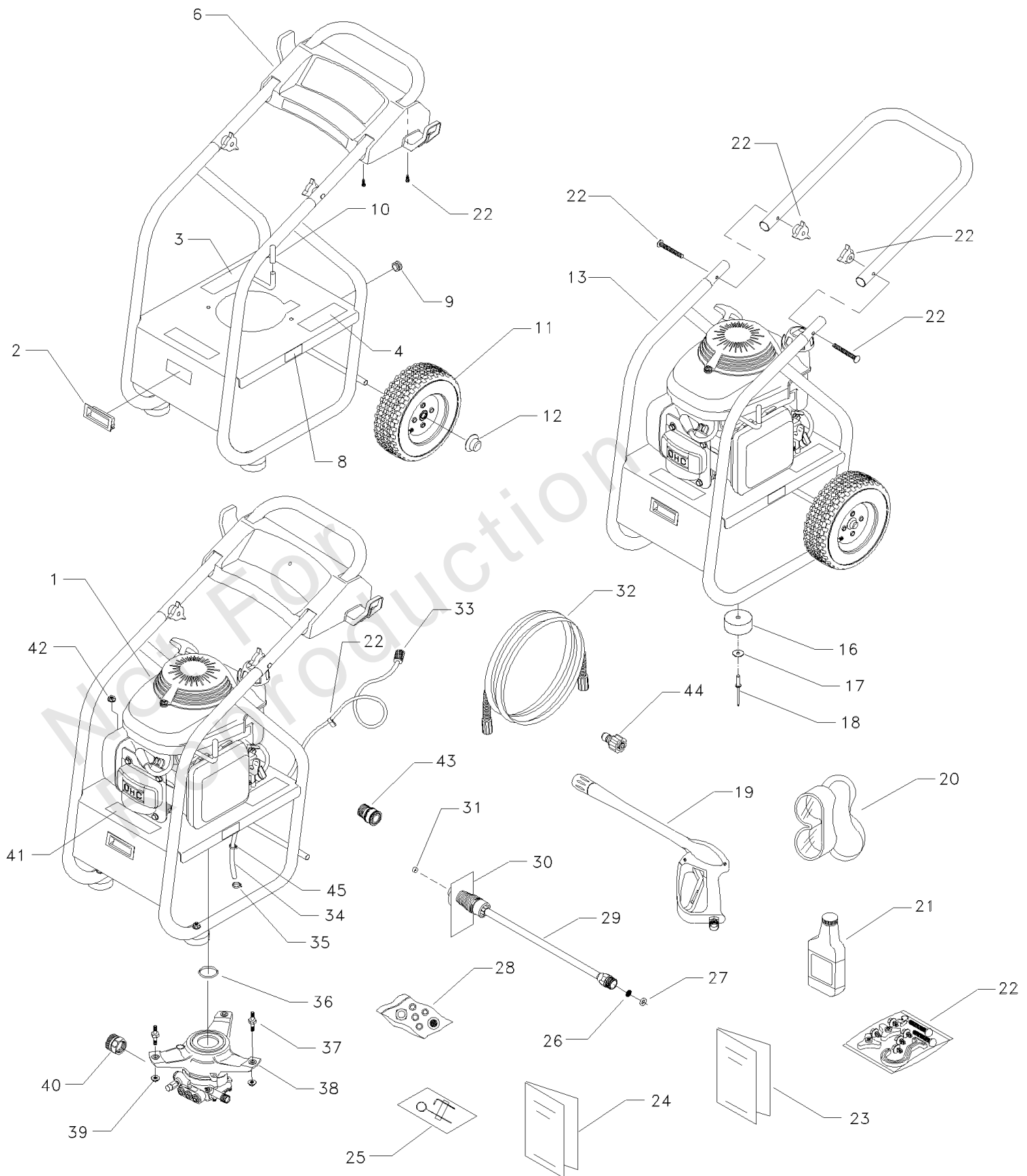
Model Components	Page
Main Unit.....	4
Pump.....	6
Torque Specification Chart.....	10

Not For  
Reproduction

# Main Unit

Note: Unless noted otherwise, use the standard torque specifications

Mfg. No: 1537-1



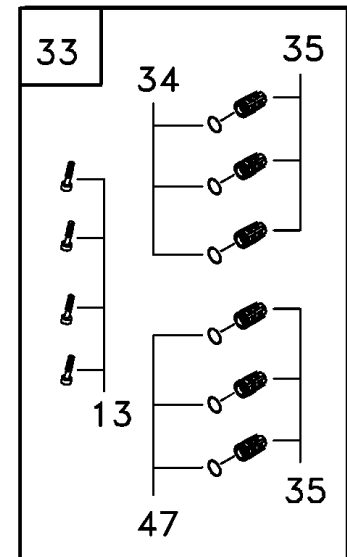
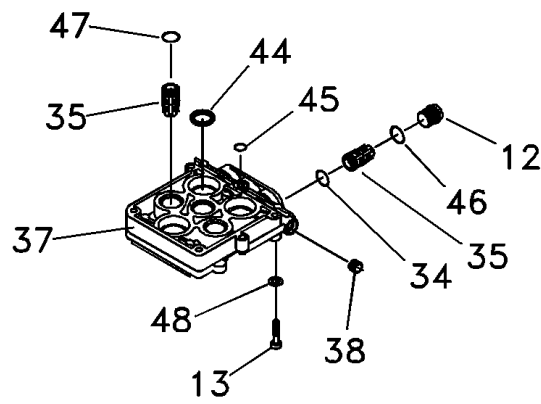
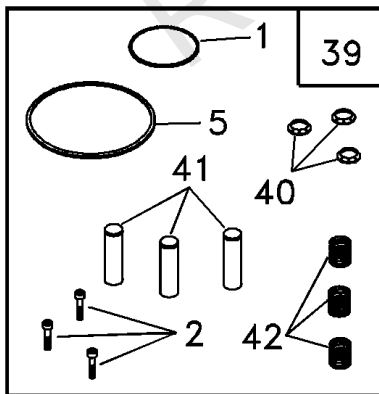
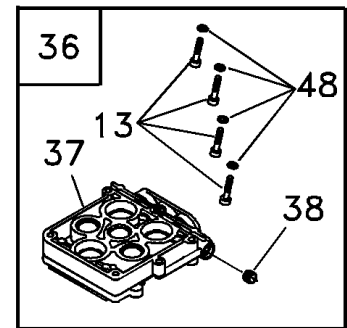
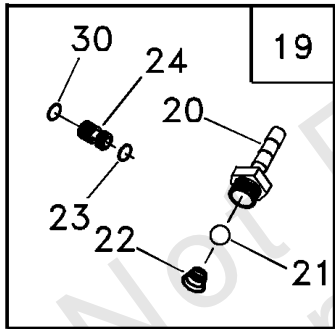
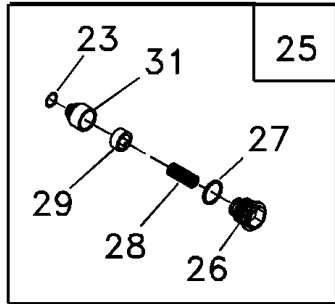
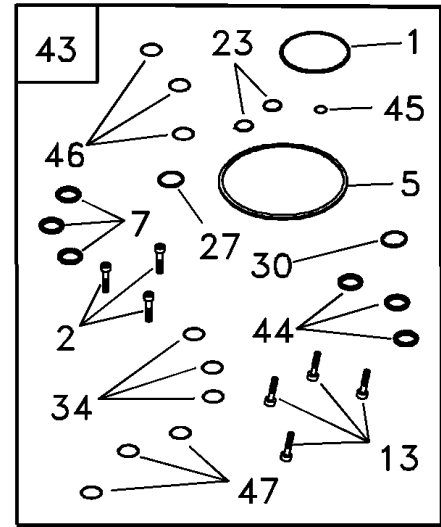
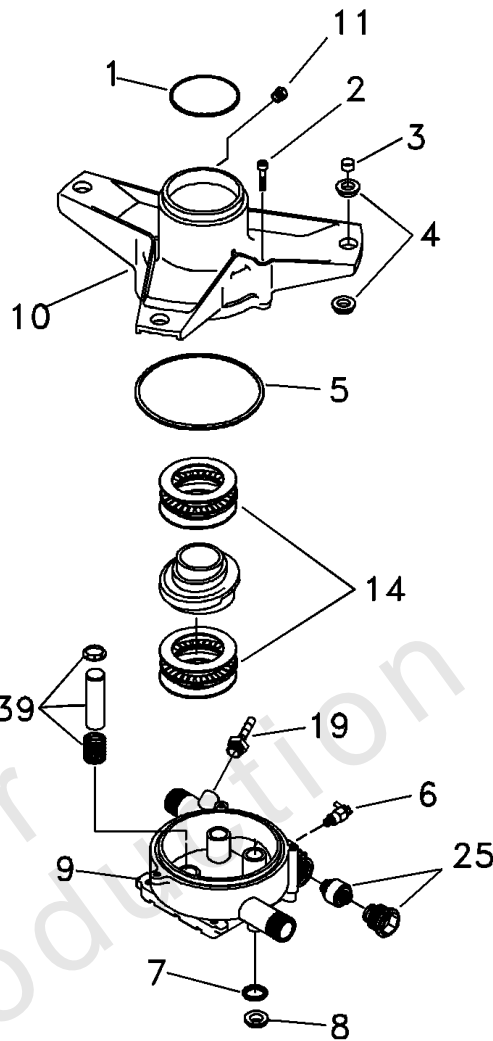
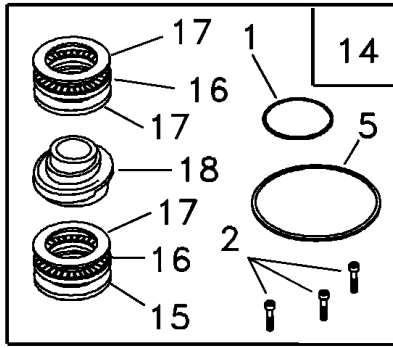
## Main Unit

REF NO	PART NO	QTY	DESCRIPTION
1	~NSP	1	ENGINE
2	187878	1	HANDLE, Lift
3	187915	1	DECAL, Warning/Decal
4	187916	1	DECAL, Start Instructions
6	187752	1	DECALS/BILLBOARD, 1537-1
8	187952	1	DECAL, Cool Down
9	30809	1	GROMMET, Chem Hose
10	B2516	1	CAP, Vinyl, Black
11	B4966	2	TIRE, 3" X 10" Black Mag
12	75402C	2	PUSHNUT, 1/2"
13	D187615	1	BASE, VSPW
14	D187602	1	HANDLE, PW
16	27007	2	MOUNT, Rubber Foot
17	71693	2	WASHER, Flat
18	188194	2	BLIND RIVET
19	B3263	1	GUN, High Pressure
20	87815	1	GOGGLES, Safety
21	BB3061B	1	OIL, 20oz
22	187623	1	KIT, Handle Hardware
23	187944	1	MANUAL, Owners
24	188036	1	MANUAL, Honda Engine
25	188287	1	KIT, Nozzle Cleaning
26	B4224	1	SCREEN, Gun Inlet
27	97837	1	O-RING, Hi - Pressure
28	B5830	1	KIT, O-Ring Maintenance
29	B3335	1	WAND, Adjustable Nozzle
30	97566	1	HANG TAG, Nozzle
31	21761	1	NOZZLE, 1.05 Yellow Replcmnt
32	B5642	1	HOSE, 1/4" X 25'
33	A1041	1	FILTER, Chemical Hose
34	A1040D	1	HOSE, Chemical
35	48031G	1	CLAMP, Hose Band
36	B2218	1	SEAL, Engine Donut
37	187198	3	STUD, Double Ended
38	-----	1	PUMP, Assembly -(For replacement, order 209940GS)
38	209940GS	1	REPLACEMENT PUMP ASSEMBLY
39	B1880	3	NUT, M8 with Washer
40	21424	1	CONNECTOR, Garden Hose
41	187918	1	DECAL, Quick Reference
42	67989	3	NUT, M8 Standard Flange
43	95518	1	QC, Wand/Accessory
44	95519	1	QC, Wand End
45	48031B	1	CLAMP, Hose Band

# Pump

Note: Unless noted otherwise, use the standard torque specifications

Mfg. No: 1537-1



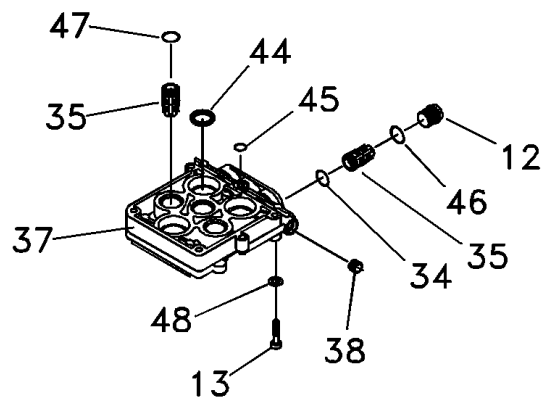
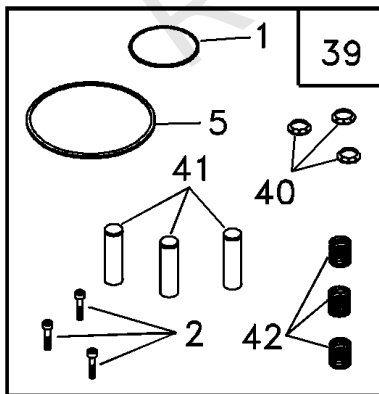
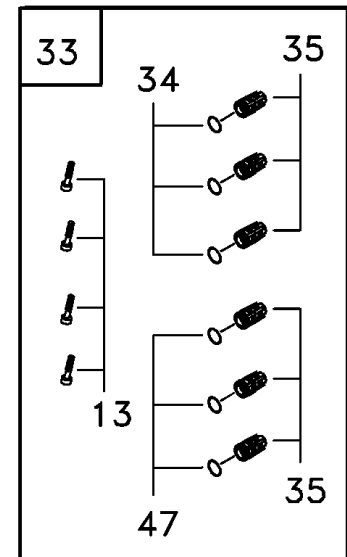
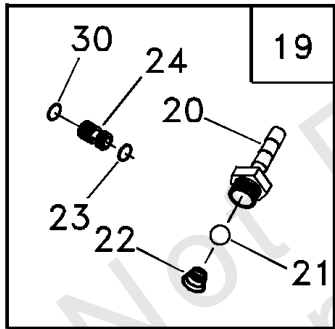
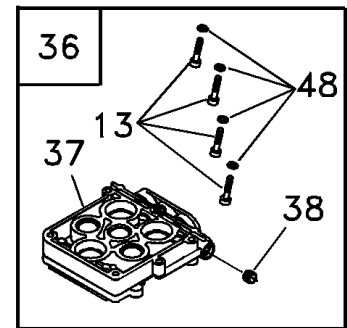
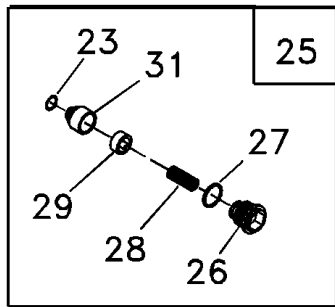
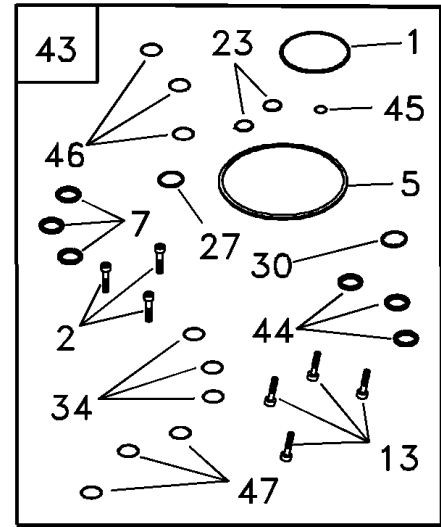
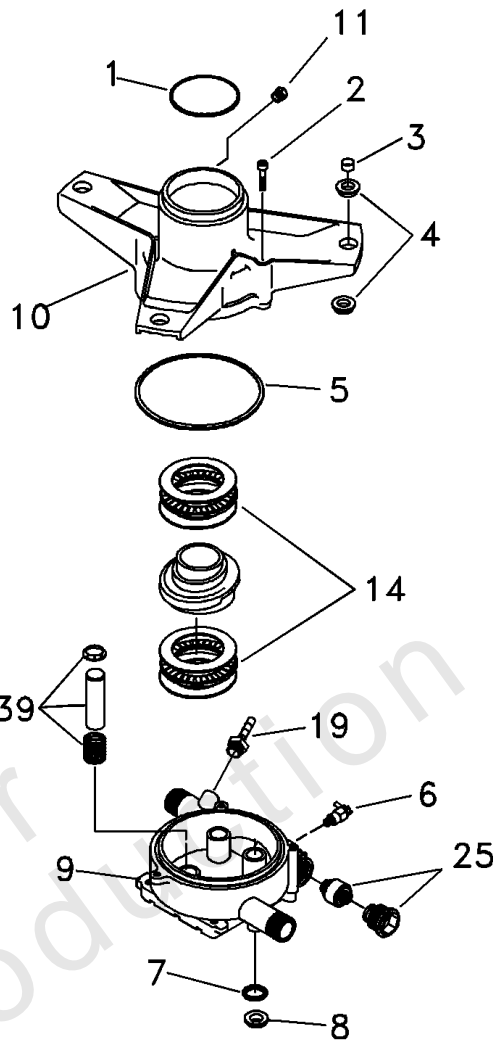
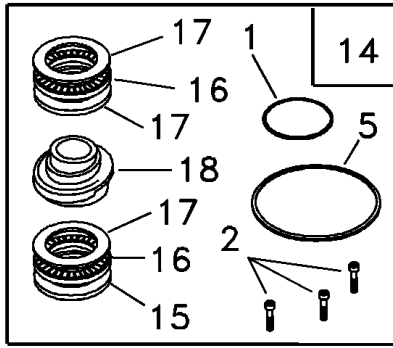
## Pump

REF NO	PART NO	QTY	DESCRIPTION
1	B2218	1	O-RING, Engine Seal
2	97962	3	SHCS, M6 - 1 x 25
3	96795	3	SLEEVE, Grommet Spacer
4	21429	6	BUSHING, Rubber Mount
5	97835	1	O-RING, Housing Seal
6	21783	1	THERMAL RELIEF, GPW-EG
7	93680	3	SEAL, Oil Piston
8	97831	3	SPACER, Pilot
9	B2702	1	HOUSING, Piston
10	B5003	1	ADAPTER, Engine
11	B5710	1	VALVE, 1/8 npt 1/5 PSI
12	97841	3	CAP, Outlet Check Valve
13	40946	4	SHCS, M6-1.0 x 35
14	185710	0	KIT, AXIAL CAM -Service kit includes all parts shown within the box. Certain parts may only be available as components of a kit.
1	-----	1	O-RING, Engine Seal
2	-----	3	SHCS, M6 - 1 x 25
5	-----	1	O-RING, Housing Seal
15	-----	1	WASHER, Brg. 36 x 65 x 6Thk
16	-----	2	ASSY., Brg. Cage 45 x 65
17	-----	3	WASHER, Brg. 45 x 65 x 1
18	-----	1	CAM, Axial 5.6 7/8"SAE
19	185287	0	KIT, CHEM INJECT -Service kit includes all parts shown within the box. Certain parts may only be available as components of a kit.
20	-----	1	FITTING, Chem Inject
21	-----	1	BALL, Chem Inject
22	-----	1	SPRING, Chem Inject
23	-----	1	O-RING, Venturi & Seat, Black
24	-----	1	VENTURI, Chem Inject
30	-----	1	O-RING, Venturi, Yellow
25	187879	0	KIT, UNLOADER -Service kit includes all parts shown within the box. Certain parts may only be available as components of a kit.
23	-----	1	O-RING, Venturi & Seat, Black
26	-----	1	CAP, Unloader
27	-----	1	O-RING, Unloader Cap
28	-----	1	SPRING, Unloader
29	-----	1	PISTON ASSY., Unloader
31	-----	1	SEAT, Unloader
33	185712	0	KIT, CHECK VALVES -Service kit includes all parts shown within the box. Certain parts may only be available as components of a kit.
13	-----	4	SHCS, M6-1.0 x 35
34	-----	3	O-RING, Check Valve
35	-----	6	ASSY., Check Valve
47	-----	3	O-RING, Check Valve, White
36	185531	0	KIT, HEAD BRASS EG -Service kit includes all parts shown within the box. Certain parts may only be available as components of a kit.
13	-----	4	SHCS, M6-1.0 x 35
37	-----	1	HEAD, Pump
38	-----	1	PLUG, 1/8-28

# Pump

Note: Unless noted otherwise, use the standard torque specifications

Mfg. No: 1537-1





## Pump

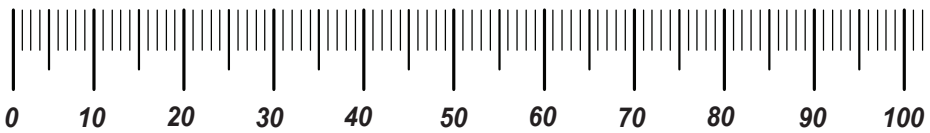
REF NO	PART NO	QTY	DESCRIPTION
48	-----	4	WASHER, M6 Flat
39	185713	0	KIT, PISTON & SPRING -Service kit includes all parts shown within the box. Certain parts may only be available as components of a kit.
1	-----	1	O-RING, Engine Seal
2	-----	3	SHCS, M6 - 1 x 25
5	-----	1	O-RING, Housing Seal
40	-----	3	RETAINER, Piston Spring
41	-----	3	PISTON, Dia. 15 x 65
42	-----	3	SPRING, Piston Return
43	185714	0	KIT, O-RING/SEAL 2300 -Service kit includes all parts shown within the box. Certain parts may only be available as components of a kit.
1	-----	1	O-RING, Engine Seal
2	-----	3	SHCS, M6 - 1 x 25
5	-----	1	O-RING, Housing Seal
7	-----	3	SEAL, Oil Piston
13	-----	4	SHCS, M6-1.0 x 35
23	-----	2	O-RING, Venturi & Seat, Black
27	-----	1	O-RING, Unloader Cap
30	-----	1	O-RING, Venturi, Yellow
34	-----	3	O-RING, Check Valve
44	-----	3	SEAL, Double-Lip
45	-----	1	O-RING, High Pressure Transfer
46	-----	3	O-RING, Outlet CV Cap
47	-----	3	O-RING, Check Valve, White

# Hardware Identification & Torque Specifications

Torque Specification Chart								
FOR STANDARD METRIC MACHINE HARDWARE (Tolerance ± 20%)								
Property Class	5.6		8.8		10.9		12.9	
	Class 5.6		Class 8.8		Class 10.9		Class 12.9	
Size Of Hardware	in/lbs	Nm.	in/lbs	Nm.	in/lbs	Nm.	in/lbs	Nm.
	ft/lbs		ft/lbs		ft/lbs		ft/lbs	
M3	5.88	.56	13.44	1.28	19.2	1.80	22.92	2.15
M4	13.44	1.28	30.72	2.90	43.44	4.10	52.56	4.95
M5	26.4	2.50	60.96	5.75	5.97	8.10	7.15	9.7
M6	44.64	4.3	7.3	9.9	10.3	14	12.1	16.5
M7	5.2	7.1	12.1	16.5	16.9	23	19.9	27
M8	7.7	10.5	17.7	24	25	34	29	40
M10	15	21	35	48	50	67	59	81
M12	26	36	61	83	86.2	117	103	140
M14	42	58	101	132	136	185	162	220
M16	64	88	147	200	210	285	250	340
M18	89	121	202	275	287	390	346	470
M20	126	171	290	390	405	550	486	660
M22	169	230	390	530	559	745	656	890
M24	217	295	497	375	708	960	840	1140
M27	320	435	733	995	1032	1400	1239	1680
M30	435	590	995	1350	1401	1900	1681	2280
M33	590	800	1349	1830	1902	2580	2278	3090
M36	759	1030	1740	2360	2441	3310	2935	3980
M39	988	1340	2249	3050	3163	4290	3798	5150

Torque Specification Chart						
FOR STANDARD MACHINE HARDWARE (Tolerance ± 20%)						
Hardware Grade	No Marks		SAE Grade 5		SAE Grade 8	
	SAE Grade 2		SAE Grade 5		SAE Grade 8	
Size Of Hardware	in/lbs	Nm.	in/lbs	Nm.	in/lbs	Nm.
	ft/lbs		ft/lbs		ft/lbs	
8-32	19	2.1	30	3.4	41	4.6
8-36	20	2.3	31	3.5	43	4.9
10-24	27	3.1	43	4.9	60	6.8
10-32	31	3.5	49	5.5	68	7.7
1/4-20	66	7.6	8	10.9	12	16.3
1/4-28	76	8.6	10	13.6	14	19.0
5/16-18	11	15.0	17	23.1	25	34.0
5/16-24	12	16.3	19	25.8	29	34.0
3/8-16	20	27.2	30	40.8	45	61.2
3/8-24	23	31.3	35	47.6	50	68.0
7/16-14	30	40.8	50	68.0	70	95.2
7/16-20	35	47.6	55	74.8	80	108.8
1/2-13	50	68.0	75	102.0	110	149.6
1/2-20	55	74.8	90	122.4	120	163.2
9/16-12	65	88.4	110	149.6	150	204.0
9/16-18	75	102.0	120	163.2	170	231.2
5/8-11	90	122.4	150	204.0	220	299.2
5/8-18	100	136	180	244.8	240	326.4
3/4-10	160	217.6	260	353.6	386	525.0
3/4-16	180	244.8	300	408.0	420	571.2
7/8-9	140	190.4	400	544.0	600	816.0
7/8-14	155	210.8	440	598.4	660	897.6
1-8	220	299.2	580	788.8	900	1,244.0
1-12	240	326.4	640	870.4	1,000	1,360.0

The guides and ruler furnished below are designed to help you select the appropriate hardware.



Nut, M8

Thread Diameter (mm)

Inside Diameter (in)      Threads per inch

Nut, 1/2-16

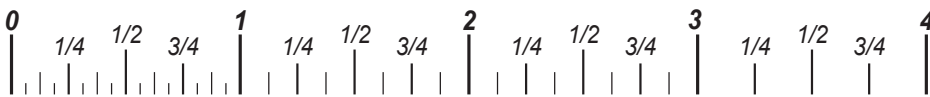


Screw, M8- 1.25 x 25

Thread Diameter (mm)      Distance between threads (mm)      Body Length (mm)

Body Diameter      Threads per inch      Body Length (in)

Screw, 1/2- 16 x 2



## Standard Hardware Sizing

When a washer or nut is identified as 1/2" (M8), this is the *Nominal size*, meaning the *inside diameter* is 1/2 inch (8mm metric thread diameter); if a second number is present it represents the *threads per inch* (distance between threads).

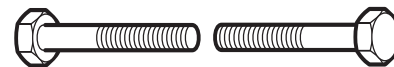
When bolt or capscrew is identified as 1/2 - 16 x 2" (M8 - 1.25 x 50), this means the *Nominal size*, or body diameter is 1/2 inch (8mm metric thread diameter), the second number, 16, represents the *threads per inch*, (*distance between threads*). The final number is the body length of the bolt or screw, 2 inches (50mm).

## NOTES

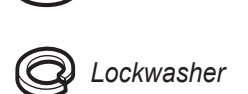
- These torque values are to be used for all hardware excluding: locknuts, self-tapping screws, thread forming screws, sheet metal screws and socket head setscrews.
- Recommended seating torque values for locknuts:
  - for prevailing torque locknuts - use 65% of grade 5 torques.
  - for flange whizlock nuts and screws - use 135% of grade 5 torques.
- Unless otherwise noted on assembly drawings, all torque values must meet this specification.

## Common Hardware Types

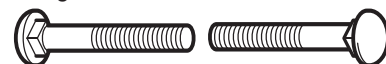
Hex Head Capscrew



Washer



Carriage Bolt



Hex Nut

## Wrench & Fastener Size Guide

1/4" Bolt or Nut Wrench—7/16"	5/16" Bolt or Nut Wrench—1/2"	3/8" Bolt or Nut Wrench—9/16"	7/16" Bolt or Nut Wrench (Bolt)—5/8" Wrench (Nut)—11/16"	1/2" Bolt or Nut Wrench—3/4"
M6 Bolt or Nut Wrench—10mm	M8 Bolt or Nut Wrench—13mm	M10 Bolt or Nut Wrench—17mm	M12 Bolt or Nut Wrench—19mm	M14 Bolt or Nut Wrench—22mm

